



WELCOME TO
GLO HOUSE

oohouse



TEMPORARY BY NATURE STUNNING BY DESIGN

Seasonally installed, fully engineered and council-approved.

Glo House is a striking atrium-style venue that effortlessly blends modern architectural elegance with the natural beauty and backdrop of Brisbane's most pristine parklands.

Designed to offer all the comfort and refinement of a premium indoor event space, this light-filled venue invites guests to feel completely immersed in nature without sacrificing climate control, style or luxury.

As Brisbane's only premium event space nestled within a botanical sanctuary, the Glo House offers a unique canvas for memorable occasions. Whether you're hosting a corporate gala, an upscale wedding or an exclusive private event, every detail is curated to create a signature experience - or as we like to call them - Gloments.

THE MOST GLORIOUS EVENTS START HERE

A sophisticated architectural statement,
Glo House is a fully transparent glass pavilion
where contemporary design meets natural
serenity.



oohouse



Crafted from precision-engineered glass and sleek aluminum framing, this breathtaking structure offers uninterrupted panoramic views of Brisbane's iconic parklands - stunning by day and magical by night.

Designed to showcase abundant natural light by day and soft illumination under the stars by night, Glo House delivers an atmosphere that feels open-air yet effortlessly chic. Unlike traditional event structures, its transparent walls and ceiling evoke a sense of grandeur while providing full protection from the elements - with integrated climate control ensuring comfort in every season.

Spanning a generous footprint, Glo House offers flexible configurations to suit events of all scales, from gala dinners and luxury weddings to brand activations and private celebrations. With premium flooring, seamless AV integration and customisable lighting it's a blank canvas for truly elevated experiences.

As Brisbane's only premium event venue set within a living garden, Glo House is where innovation synergises with nature and every occasion becomes a signature Gloment.

2026 SCHEDULE

May - November: City Botanic Gardens

2027 SCHEDULE

To be announced in early 2026

STRUCTURE SIZE

30m x 15m (450 sqm)

GUEST CAPACITY

Banquet-style seating up to 300 guests

Cocktail-style up to 450 guests

VENUE ACCESS

Monday - Saturday

7:00 AM – 10:00 PM

Sunday & Public Holidays

8:00 AM - 9:00 PM

PARKING

Convenient parking options are available near every Glo House location

RIGGING

Equipped with integrated structural rigging points, the ceiling is designed to accommodate a wide range of technical and decorative installations

CLIMATE CONTROL

Fully air-conditioned to ensure guest comfort in every season

INTEGRATED POWER SUPPLY

A dedicated power supply supports all event needs, including lighting, audio-visual, event activations, and catering requirements

AUDIO-VISUAL

Glo House comes equipped with:

Integrated sound system

Ambient lighting

Stage and lectern

Wireless microphones

Dedicated AV show technician

FLOORING

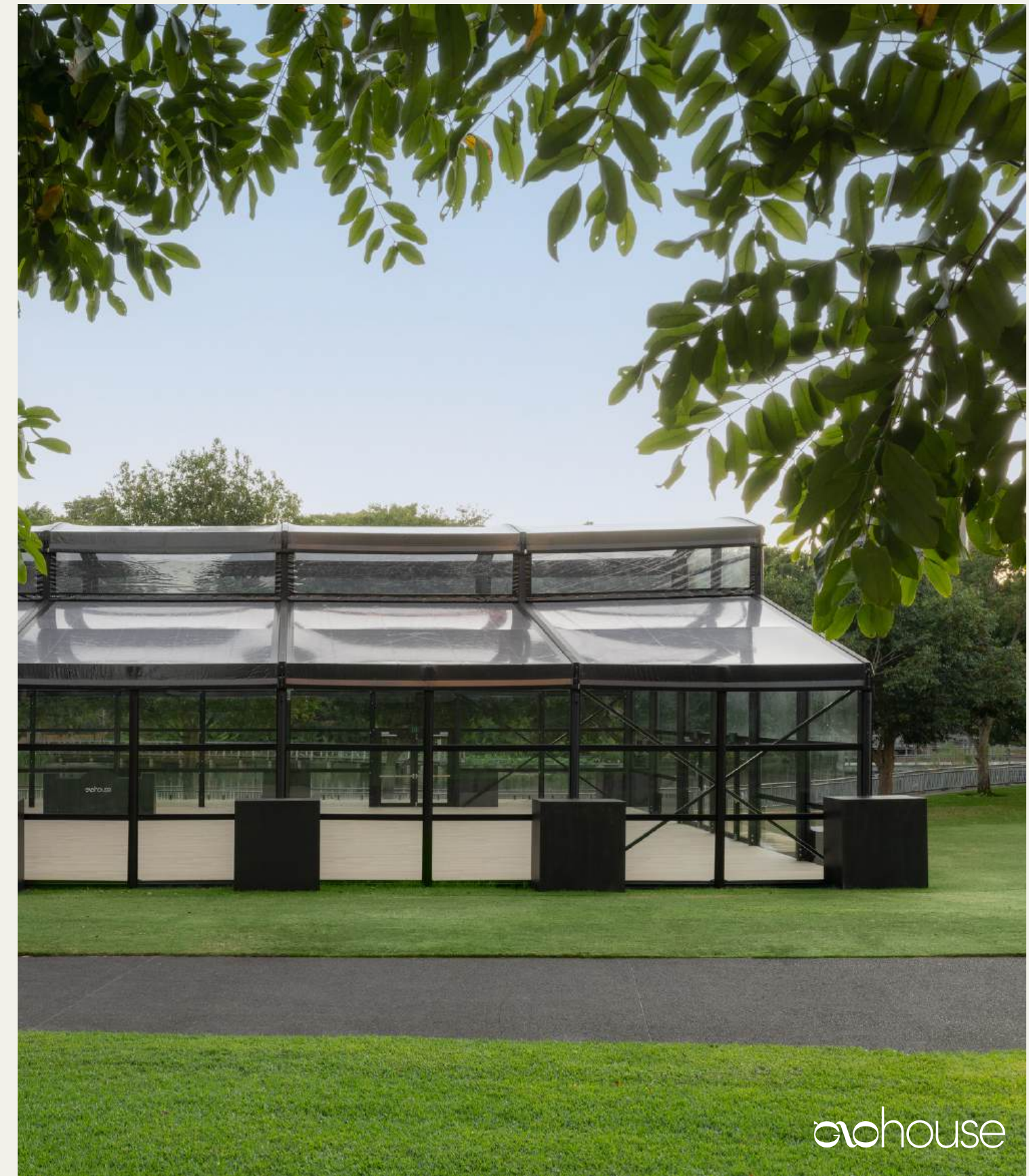
Premium flooring runs throughout the venue, blending effortlessly into the staircase entrance and setting a warm, inviting tone from the moment guests arrive

GUEST BREAK-OUT AREA

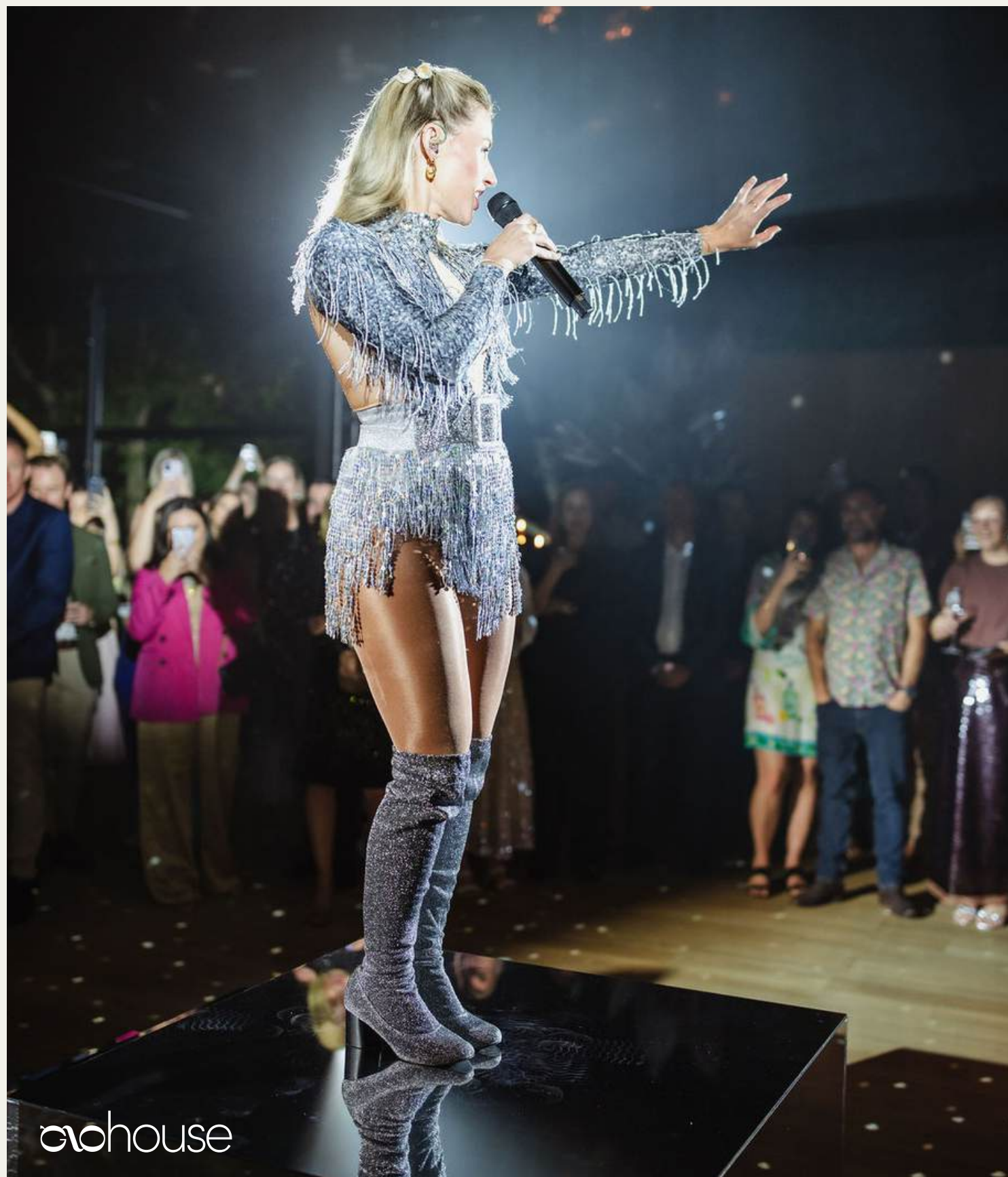
Every Glo House location features a thoughtfully designed break-out space, providing guests with a serene retreat that seamlessly blends refined interiors with the surrounding natural landscape

RESTROOMS

Luxury portable restrooms will be positioned onsite for exclusive use by event guests







evohouse

BRISBANE'S MOST BEAUTIFUL AND UNIQUE VENUE

Limited seasonal availability
Dates fill quickly during peak months
Enquire early to secure your preferred date

YOUR GLOMENT AWAITS

LET'S GLO

The Glo House is available for exclusive private hire, designed for those seeking a truly standout event experience.

We're here to ensure your event is nothing short of extraordinary in a truly unforgettable setting.

anthony@gloevents.com.au

0413 433 134

glohouse



glohouse